



DIVISION FOR CONSERVATION OF HERITAGE SITES  
DEPARTMENT OF CULTURE  
MINISTRY OF HOME & CULTURAL AFFAIRS

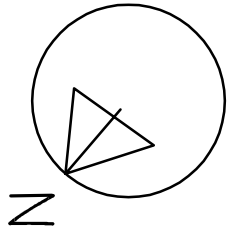
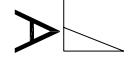
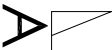
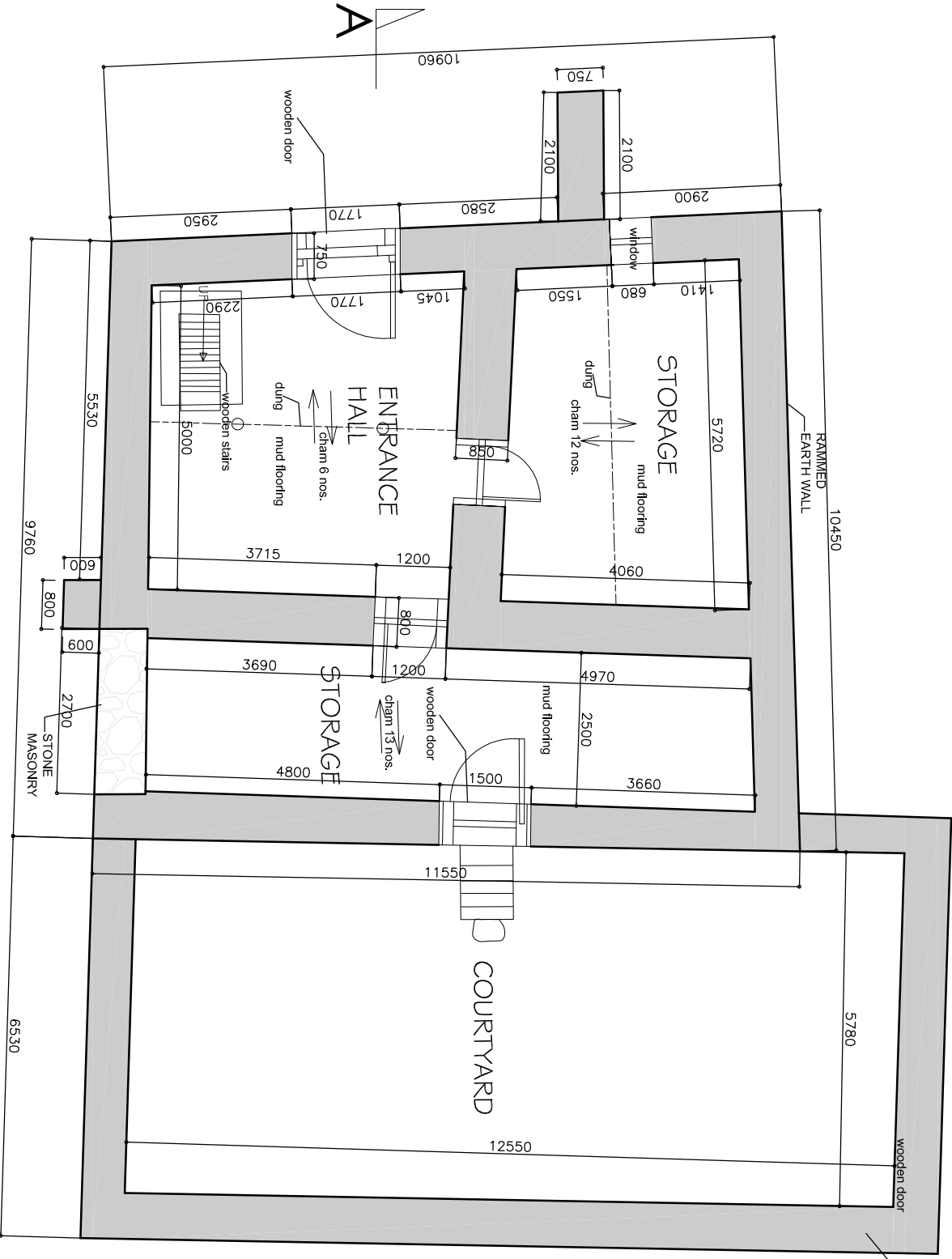
PROJECT TITLE: BABESA-HOUSE-DOCUMENTATION-(A-P-TANDIN)  
BUILDING TYPE: TRADITIONAL-BHUIJANESE-HOUSE  
DRAWING TITLE: G.F-PLAN

APPROVED BY: HEAD, DGHS, DOC

DIRECTOR, DOC

Architect / Drawn by: DATE: DATE

SCALE: 1:100  
SHEET NO. NO



Rammed mud boundary wall



DIVISION FOR CONSERVATION OF HERITAGE SITES  
DEPARTMENT OF CULTURE  
MINISTRY OF HOME & CULTURAL AFFAIRS

PROJECT TITLE: BABESA-HOUSE-DOCUMENTATION-(AP-TANDIN)  
BUILDING TYPE: TRADITIONAL-BHUIANESE-HOUSE  
DRAWING TITLE: SECTION

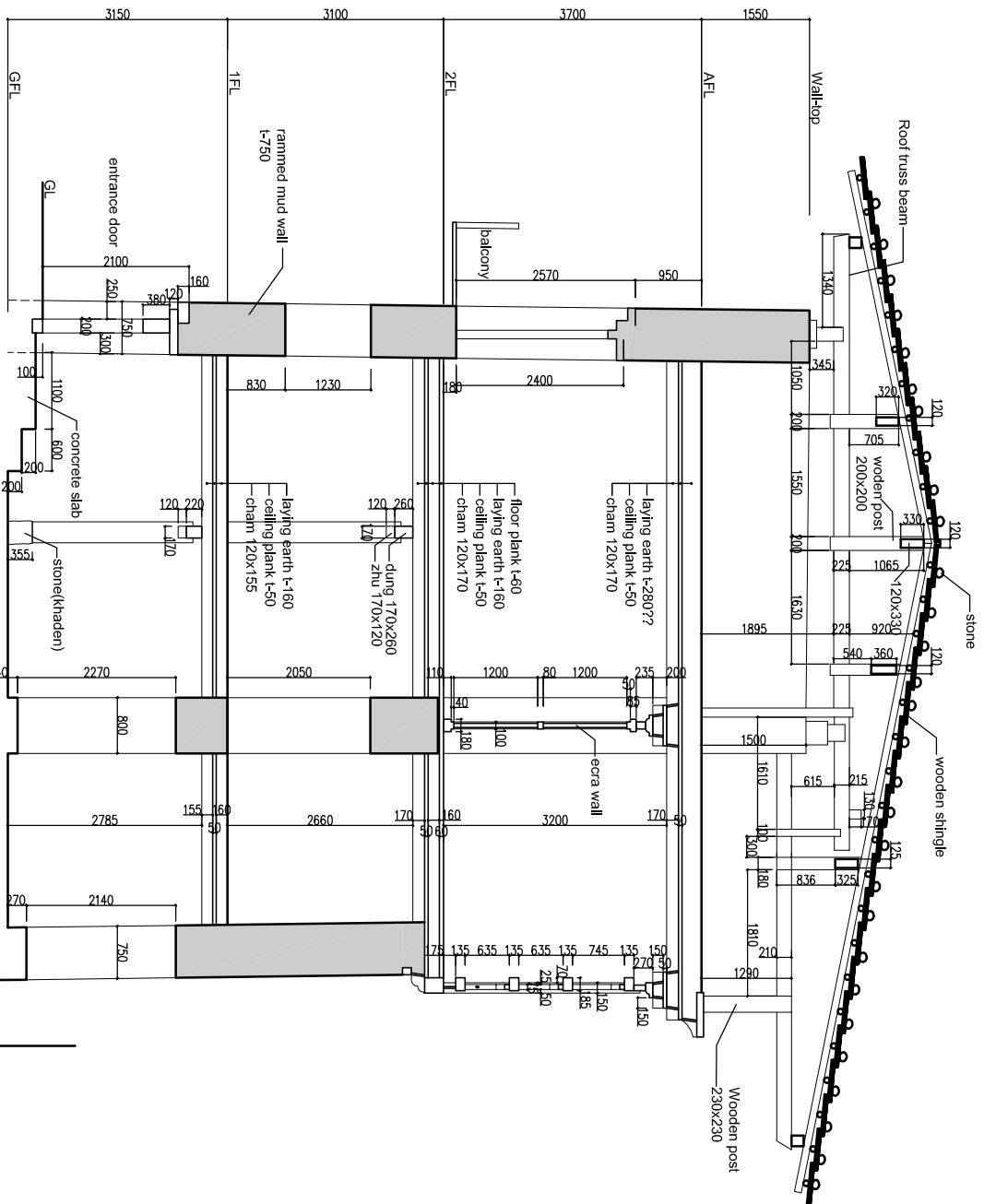
APPROVED BY: HEAD, DGHS, DOC

DIRECTOR, DOC

Architect / Drawn By:  
DATE: DATE

SCALE: 1:100  
SHEET NO. NO

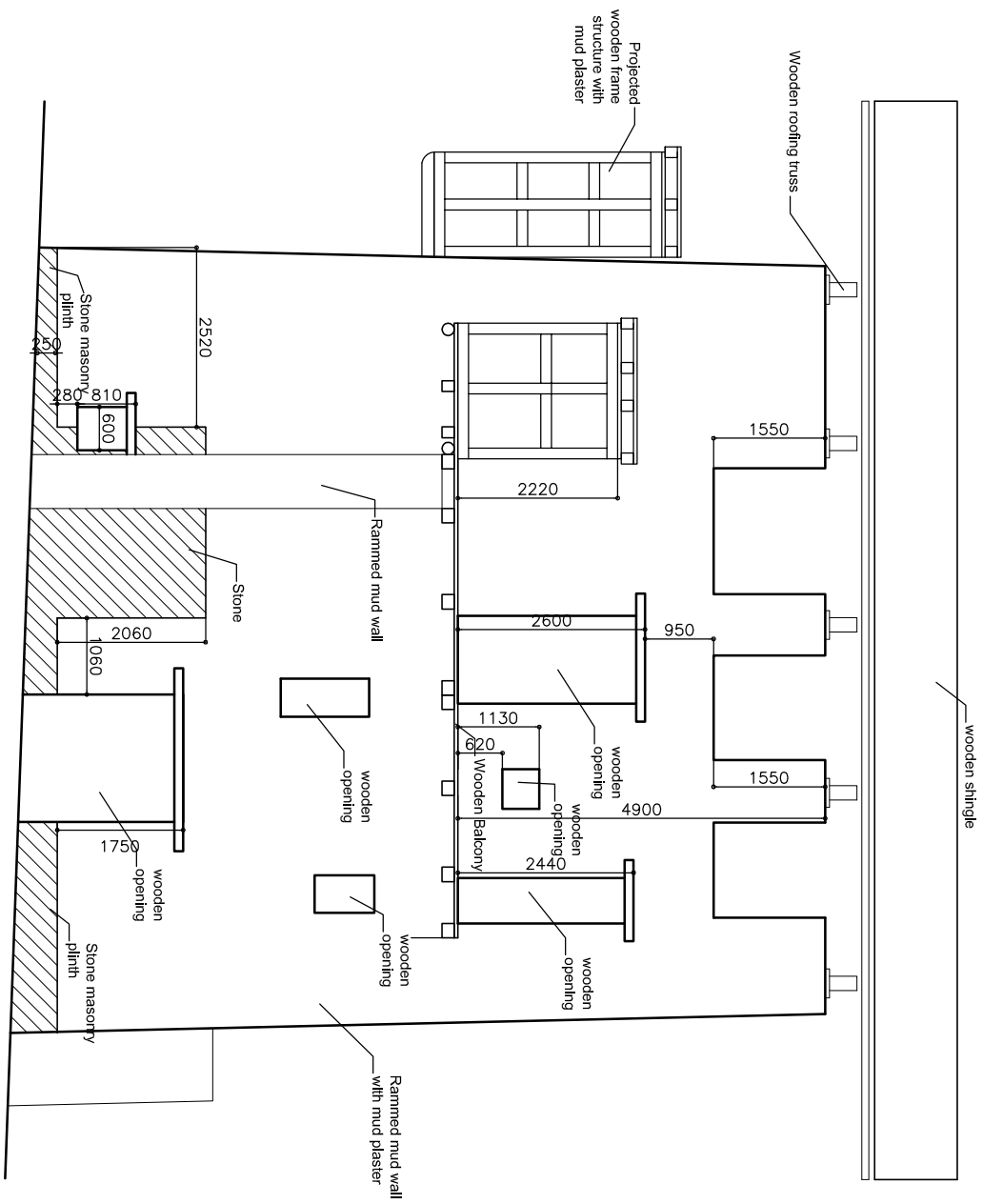
BABESA HOUSE (Ap. Tandin) 05/01/12  
CROSS-SECTION





DIVISION FOR CONSERVATION OF HERITAGE SITES  
DEPARTMENT OF CULTURE  
MINISTRY OF HOME & CULTURAL AFFAIRS

**BABESA HOUSE (Ap. Tandin) 05/01/12  
ELEVATION (SOUTH)**



PROJECT TITLE:	BABESA-HOUSE-DOCUMENTATION-(AP-TANDIN)	APPROVED BY:		Architect / Drawn by:		SCALE:	1:100
BUILDING TYPE:	TRADITIONAL-BHUTANESE-HOUSE	HEAD, DCHS, DOC		DATE:		SHEET NO.	NO
DRAWING TITLE:	ELEVATION	DIRECTOR, DOC		DATE			