



Date of issue: 18th May, 2020

Time of issue: 4:00 PM

Report on the Extremely Severe Cyclonic Storm ‘AMPHAN’

The Cyclonic Storm ‘AMPHAN’ (*pronounced as UM-PUN*) formed on 16th May, 2020 over southwest Bay of Bengal and adjoining south Andaman Sea intensified into an Extremely Severe Cyclonic Storm today on 18 May 2020. It is very likely to intensify further into a Super Cyclonic Storm during the next 6 hours (18th May). It is very likely to move northwards across northwest Bay of Bengal and cross West Bengal – Bangladesh during the afternoon/evening of 20th May 2020 as a Very Severe Cyclonic Storm.

Weather Forecast for the next 72 days.

19th May, 2020

- Light to moderate over the country.
- Thunderstorms accompanied by lightning are likely over isolated parts of the country during the same period.
- Wind gusts are also expected at isolated places of the country.

20-21st May, 2020

- Heavy rainfall is expected over the country.
- Thunderstorms accompanied by lightning are likely over isolated parts of the country during the same period.
- Wind gusts are also expected at isolated places of the country



རྒྱལ་ཡོངས་ཚུ་དབྱུང་དང་གནམ་གཤིས་རིག་པའི་ལྗེ་བ།
དཔལ་ལྷན་འབྲུག་གཞུང་།
National Center for Hydrology and Meteorology
Thimphu: Bhutan



Following images show the location of the cyclone, its distance from landfall and its path.

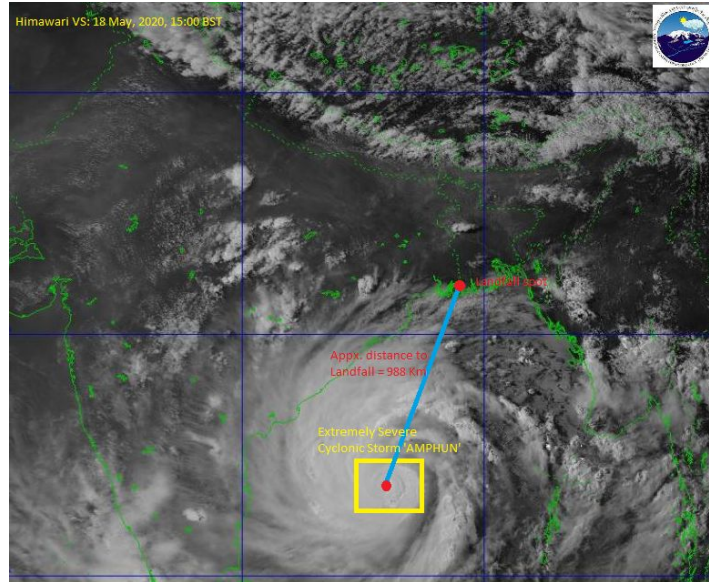


Figure 1: Distance to Landfall (*Himawari VS image of 18 May, 2020, 15:00 BST at NCHM*)

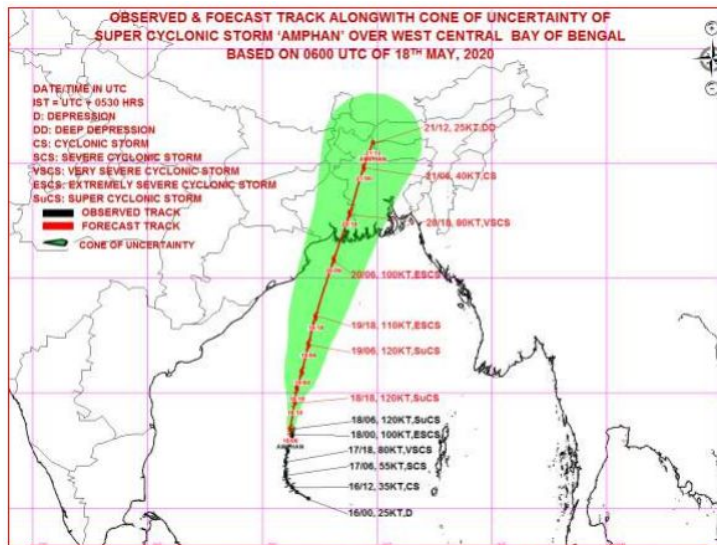


Figure 2: Cyclone path updated at 3:15PM, 18th May, 2020
(Source: Indian Meteorological Department)

National Center for Hydrology and Meteorology
Thimphu